

**SECUR EASY CUT**  
CUT-OFF WHEELS IN THE  
STEEL INDUSTRY FOR MATERIALS  
WITH HIGH INTERNAL STRESSES

# SECUR EASY CUT

TYROLIT has developed the SECUR Easy Cut product line with the specific aim of increasing process stability when cutting large workpieces in materials with high internal stresses. The unique combination of conical wheel shape and a completely re-defined wheel topography with particularly easy cutting side surfaces greatly reduces the risk of jamming during cutting.

### Application

Cutting of large workpieces in materials with high internal stresses in the steel industry



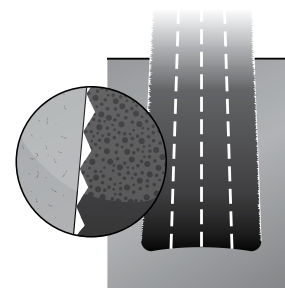
**+ Maximum process stability:**  
The extremely rough and easy cutting side faces actively inhibit jamming, preventing costly machine downtime.

**+ Reduced risk of jamming:**  
The conical wheel design and the special surface properties of the SECUR Easy Cut reduce lateral friction and heat build-up in the cutting channel thus preventing the wheel from blocking.

**+ White cut:** The thermal load on the workpiece is reduced by the conical wheel shape.

## Product range

Conical cut-off wheels	Diameter	
	mm	inch
SECUR Shape 41KON for high-performance machines	1600	63
	1840	72
SECUR Super Thin Shape 41ST for low-performance machines	2000	79



**Schematic diagram**  
The targeted roughness of the side surfaces enables the cut-off wheel to "grind itself free".